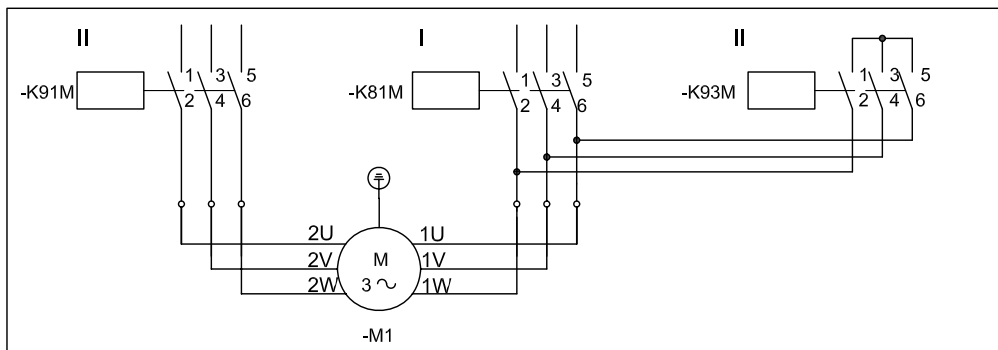
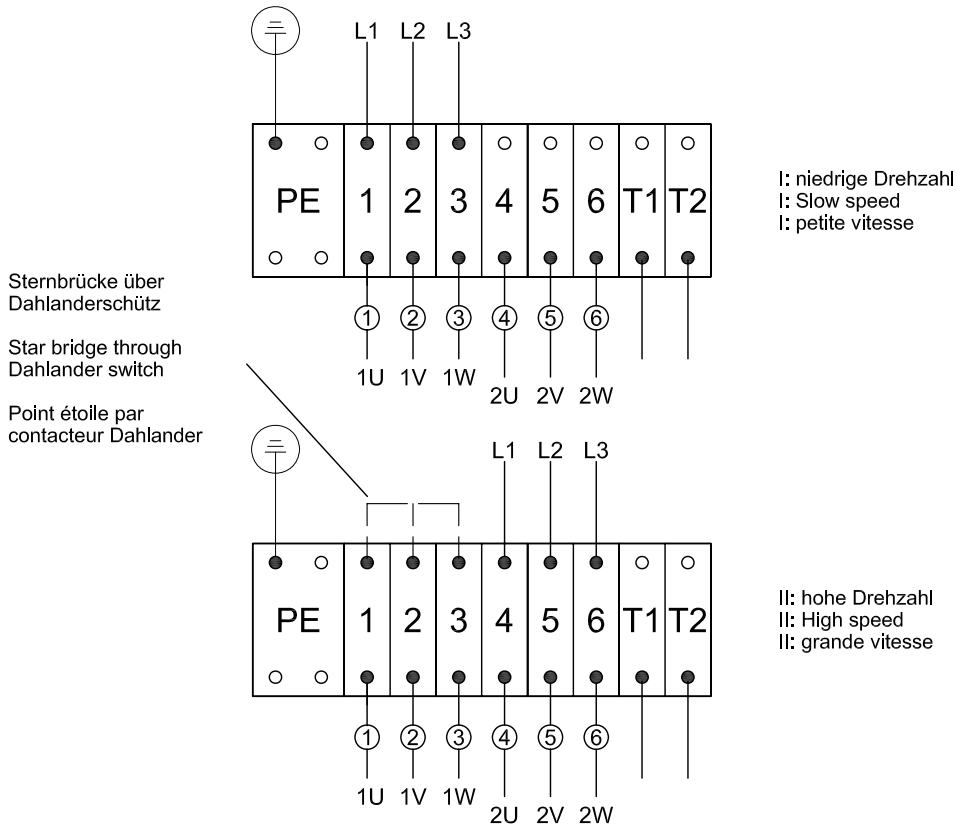


Motor 2 Drehzahlen, Dahlanderschaltung D/YY oder Y/YY
 (T1-T2 Thermischer Motorschutz optional)

Motor 2 Speeds, Dahlander connection D/YY or Y/YY
 (T1-T2 Thermal Motor protection optional)

Moteur 2 vitesses, Couplage Dahlander D/YY ou Y/YY
 (T1-T2 Protection thermique moteur)



| | IEC / EN 60034-8 | NEMA MG 1 | Farbe | Colour | Couleur |
|--|---------------------|----------------|--------------------------|-------------------------|--------------------------|
| Netzanschluß Supply lines Branchement réseau | L1 L2 L3 | L1 L2 L3 | | | |
| Motorwicklung Motor winding | 1U 1V 1W | T1 T2 T3 | schwarz blau braun | black blue brown | noir bleu marron |
| Bobinage du moteur | 2U 2V 2W | T5 T6 T4 | gelb rot violett | yellow red violet | jaune rouge violet |
| I | Niedrige Drehzahl | Low speed | Vitesse basse | | |
| II | Hohe Drehzahl | High speed | Vitesse haute | | |