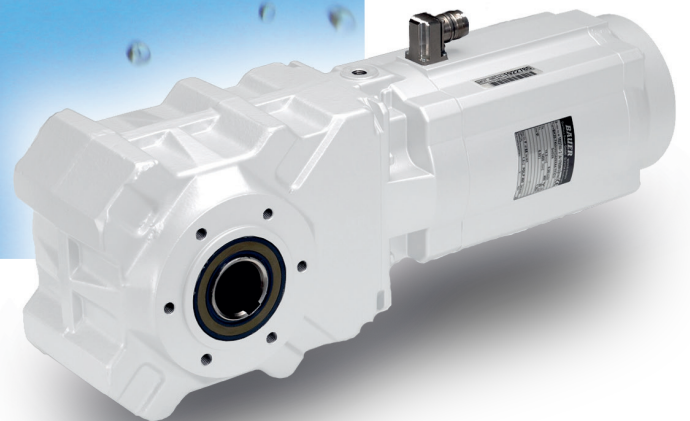




**Hygiene in the
food and
luxury foods
industry**
Energy effi-
cient solutions
for clean pro-
duction

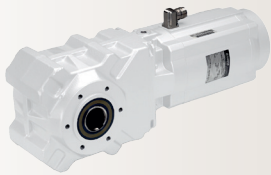


 **Bauer**[®]
Gear Motor

An Altra Industrial Motion Company



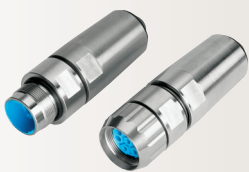
CleanDrive™



AsepticDrive™



AsepticDrive™
with mounting solutions



CleanConnect®

Drive system requirements

The food and luxury foods industry is confronted with a constantly growing challenge. The world population has reached nearly seven billion people and the UN anticipates further growth of 79 million people per year in the next five years. The UN assumes that the world population in 2050 will be more than nine billion people. Furthermore, the worldwide demand for high-quality food is increasing dramatically, primarily due to the rapid economic advancement of the newly industrialised countries. This means that food production must increase by nearly 50% in the coming decades.

Accordingly, the food and luxury foods industry must adapt itself to the new situation. Increasing productivity and production volume will become more critical. In order to maintain product quality and if possible improve it during this development, absolute process reliability is essential. No company can afford protracted disruptions due to hygiene problems in production.

For this reason, the requirements for production plants and equipment are becoming more and more stringent. Only those companies that can achieve a harmonious balance of increased productivity and process optimisation will be able to prevail in this growing market. Bauer has found this balance with the aseptic concept. With optimal cleaning characteristics, completely smooth surfaces and very high energy efficiency, we are ready for the future.

In the hygiene-sensitive segments of the food and luxury foods industry as well as the pharmaceutical industry, drive systems are usually located in the same area as the open product flow. This leads to very stringent requirements for hygiene concepts. The drive units should be readily accessible and easy to clean. In addition, they must have the best possible resistance to commonly used cleaning products. Cleaning strategies involving the alternating use of

acidic and alkaline products should be taken into account here. Air turbulence generated by the drive, and the associated air circulation, is another problem that should not be taken lightly.

If in addition the drive system is located above the product, there is a risk of direct contact with the product and contamination of the product cycle. In this situation, special attention must be given to proper hygiene, and bacterial growth on surfaces must be avoided under all circumstances.

With more than eighty years of experience in designing drives, Bauer is a recognised and respected partner in drive engineering. The special aseptic product line, developed specifically for the food industry, promises the highest production hygiene by taking the typical challenges facing this industry into account.



Solutions

Surfaces

- Special geared motor design with fully smooth surfaces (roughness value $R \leq 0.8 \mu\text{m}$) to ensure fast and complete cleaning.
- All surfaces slope by at least 3° to prevent the formation of dirt deposits and allow run off of cleaning products.
- The outer surfaces of the drives are coated with a paint that causes water to drip off the surface („lotus effect“). This yields better hygiene properties than stainless steel, which is hydrophilic.
- Bauer aseptic paint is FDA and NSF listed.

Energy Efficiency

- All motors are designed to comply with the new IE2 energy efficiency class. Most of them already comply with the IE3 energy efficiency class, which will come into force in 2015.

Degree of Protection

- The drives have the degree of protection IP 67 (resistant to short-term immersion) as standard; IP 69K (resistant to high-pressure cleaning) is optionally available.

Cleaning

- The drives can be cleaned with all commercially available products having pH values of 2 to 12. This makes it considerably easier for plant engineering firms to comply with the new Machinery Directive (2006/42/EC).
- The use of non-ventilated motors eliminates the distribution of micro-organisms in production facilities by air streams generated by motor fans.

Mounting

- Full encapsulation of brakes and encoders is possible.
- Hollow and keyed shafts are available in V4A steel.
- All connections are implemented using stainless steel plug-and-socket connectors or cable glands.
- The smooth case design eliminates the need for stainless steel covers, so hygiene problems due to contamination under these covers are eliminated. Removing these protective covers also enables further cost optimisation.

FDA

The Food and Drug Administration (FDA) is responsible for protecting public health in the USA. The FDA issues guidelines for the composition and production of drugs and food, which are mandatory regulations for products manufactured in the USA or exported to the USA. They are also used as guidelines for products manufactured and used in the EU.

Motor ratings

Available ratings for continuous duty (S1):

Motor type	Rating	Feature
DA05LA4	0,06 kW	
DA05LA4	0,09 kW	
DA05LA4	0,12 kW	
DA08LA4	0,25 kW	
DA08LA4	0,37 kW	IE3 compl.
DA09LA4	0,55 kW	IE3 compl.
DA09XA4	0,75 kW	IE3
DA09XA4	1,1 kW	IE2
DA11LA4	1,5 kW	IE3
DA11LA4	2,2 kW	IE2

Couplings

Ameridrives Couplings

Mill Spindles, Ameriflex, Ameridisc

Erie, PA - USA
1-814-480-5000

Gear Couplings

San Marcos, TX - USA
1-800-458-0887

Bibby Transmissions

Disc, Gear, Grid Couplings, Overload Clutches

Dewsbury, England
+44 (0) 1924 460801

Boksburg, South Africa
+27 11 918 4270

TB Wood's

Elastomeric Couplings

Chambersburg, PA - USA
1-888-829-6637 – Press #5

*For application assistance:
1-888-829-6637 – Press #7*

*General Purpose
Disc Couplings*

San Marcos, TX - USA
1-888-449-9439

Ameridrives Power Transmission

Universal Joints, Drive Shafts, Mill Gear Couplings

Green Bay, WI - USA
1-920-593-2444

Huco Dynatork

Precision Couplings and Air Motors

Hertford, England
+44 (0) 1992 501900

Charlotte, NC - USA
1-800-825-6544

Linear Products

Warner Linear

Linear Actuators

Belvidere, IL - USA
1-800-825-6544

*For application assistance:
1-800-825-9050*

St Barthelemy d'Anjou, France
+33 (0) 2 41 21 24 24

Electromagnetic Clutches and Brakes

Warner Electric

Electromagnetic Clutches and Brakes

New Hartford, CT - USA
1-800-825-6544

*For application assistance:
1-800-825-9050*

St Barthelemy d'Anjou, France
+33 (0) 2 41 21 24 24

Precision Electric Coils and Electromagnetic Clutches and Brakes

Columbia City, IN - USA
1-260-244-6183

Matrix International

Electromagnetic Clutches and Brakes, Pressure Operated Clutches and Brakes

Brechin, Scotland
+44 (0) 1356 602000

New Hartford, CT - USA
1-800-825-6544

Inertia Dynamics

Spring Set Brakes; Power On and Wrap Spring Clutch/Brakes

New Hartford, CT - USA
1-800-800-6445

Overrunning Clutches

Formsprag Clutch

Overrunning Clutches and Holdbacks

Warren, MI - USA
1-800-348-0881 – Press #1

*For application assistance:
1-800-348-0881 – Press #2*

Marland Clutch

Roller Ramp and Sprag Type Overrunning Clutches and Backstops

South Beloit, IL - USA
1-800-216-3515

Stieber Clutch

Overrunning Clutches and Holdbacks

Heidelberg, Germany
+49 (0) 6221 30 47 0

Heavy Duty Clutches and Brakes

Wichita Clutch

Pneumatic Clutches and Brakes

Wichita Falls, TX - USA
1-800-964-3262

Bedford, England
+44 (0) 1234 350311

Twiflex Limited

Caliper Brakes and Thrusters

Twickenham, England
+44 (0) 20 8894 1161

Industrial Clutch

Pneumatic and Oil Immersed Clutches and Brakes

Waukesha, WI - USA
1-262-547-3357

Gearing

Boston Gear

Enclosed and Open Gearing, Electrical and Mechanical P.T. Components

Charlotte, NC - USA
1-800-825-6544

*For application assistance:
1-800-816-5608*

Bauer Gear Motor

Gearred Motors

Esslingen, Germany
+49 (711) 3518-0

Nuttall Gear and Delroyd Worm Gear

Worm Gear and Helical Speed Reducers

Niagara Falls, NY - USA
1-716-298-4100

Belted Drives and Sheaves

TB Wood's

Belted Drives

Chambersburg, PA - USA
1-888-829-6637 – Press #5

*For application assistance:
1-888-829-6637 – Press #7*

Engineered Bearing Assemblies

Kilian Manufacturing

Engineered Bearing Assemblies

Syracuse, NY - USA
1-315-432-0700

Bauer Gear Motor

Bauer Gear Motor GmbH

Eberhard-Bauer-Strasse 36-60
73734 Esslingen - Germany

+49 711 3518 0
+49 711 3518 381 (Fax)

www.bauergears.com

Bauer Gear Motor s.r.o

Tovarenská 49
953 01 Zlate Moravce - Slovakia

+65 6487 4464
+65 6487 6674 (Fax)

www.bauergears.com

Bauer Gear Motor Limited

Nat Lane Business Park
Winsford, Cheshire
CW7 3BS - United Kingdom

+44 1606 868600
+44 1606 868603 (Fax)

www.bauergears.com

Bauer Gear Motor Finland Oy Ab

Yrittäjankuja 3
01800 Klaukkala - Finland

+358 207 189 700
+358 207 189 701 (Fax)

www.bauergears.com

Bauer Gear Motor LLC

31 Schoolhouse Rd.
Somerset NJ 08873-1212 - USA

+1 732 469 8770
+1 732 469 8773 (Fax)

www.bauergears.com

Bauer assumes no liability or responsibility for misprints and errors in catalogues, brochures and other printed documentation. Bauer reserves the right to make changes to products without prior notice, including to products that have already been ordered, unless contractual technical specifications are affected by such changes. All trademarks in these publications are the sole and exclusive property of the relevant companies. Bauer and the Bauer logo are trademarks of Bauer Gear Motor GmbH. All rights reserved.



www.bauergears.com

Eberhard-Bauer-Strasse 36-60
73734 Esslingen, Germany
Tel: +49 711 3518-0
Fax: +49 711 3518-381